

Installation Instructions

Tool Required

- . Utility Knife
- . Straight Edge
- . Tape Measure
- . Spacers

Do not use foam underlayment under SPC Floors.

Prior to Installation

The surface of the floor must be clean,dry and stable.

Any polish,dirt,paint,etc must be removed form the job surface.

The floor surface must be flat and leveled with a scraper and putty knife.

Room temperature shall be no less than 15 °C(59 °F) before,during and after installation.

Check that the doors can still open and close after the floor has been installed(minimum+1 cm(3/8"))

Cartons must be stored horizontally at all times,protect carton corners from damage.

Installation

Ensure that all installing products must be the same lot numbers.

Position the plank to be installed at an angle of 15° to 20° to the plank already installed.

Move the plank gently up and down and at the same time exert forward pressure.

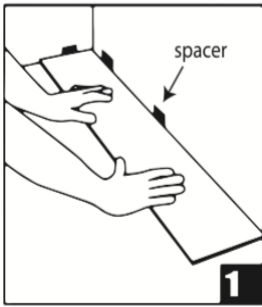
The planks will automatically click into place.

You can either insert the tongue into the groove,or the groove into the tongue.

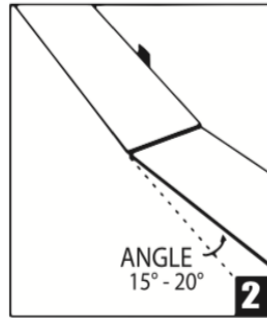
The tongue in groove method is the most common and easiest way,Please refer to the installation diagrams for more details.

Site Condition :

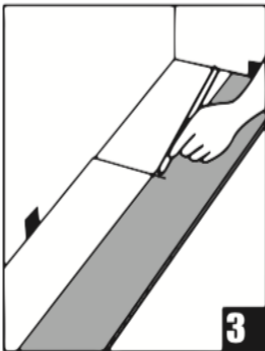
- a. Existing floor surface level must be within acceptable level with a tolerance level of 1mm only. Otherwise,this will cause high low between vinyl planks and waviness effect after completion.
- b. It is advisable to do self-leveling cement before lay ninyl plank for uneven floor.
- c. For vinyl glued-on,floor and wall (if any)moisture must be within acceptable range. Otherwise,it is advisable to apply water proof liquid before self-leveling cement for floor and primer for wall .
- d. Uneven wall surface will cause a gap between vinyl and wall,it is advisable to skim coat the gap when floor completed. This can be substituted with wall skirting.
- e. If floor skirting is excluded,it is advisable for vinyl plank to be installed first before any wall panel/partition/furniture lay to avoid visible gap between wall and vinyl plank.In this installation,floor cover is compulsory to protect the completed vinyl flooring.
- f. If floor skirting is included,it is advisable for vinyl plank to be installed last to avoid damage to the vinyl flooring.



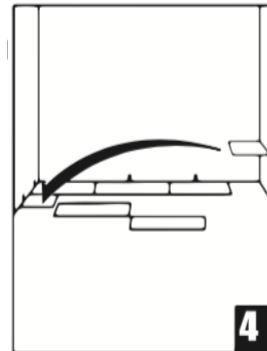
Start at a corner.
Place first plank with tongue side facing wall.
Use spacers to maintain an expansion space of 2–3 mm between wall and flooring.



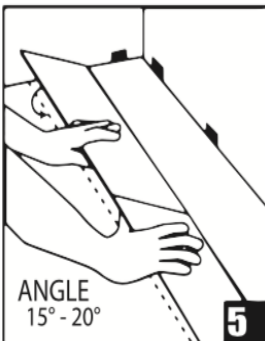
Insert 2nd plank's end tongue to 1st plank's groove at an angle of 15° to 20°. The plank will click into place when lowered. Line up edges carefully. Planks should be flat to the floor.



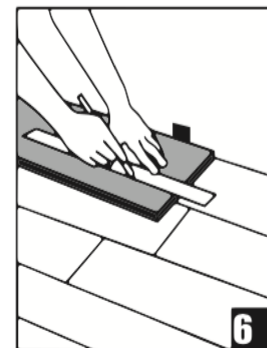
For the last plank of a row, flip a full plank to its under side and place beside the row. Measure and mark the required length. Use a ruler and utility knife to score the plank and snap off. Insert as previous diagram.



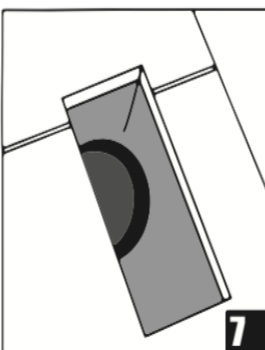
Begin next row with the last cut off piece from the previous row to stagger the pattern.



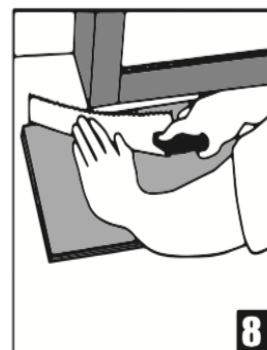
To start second row, assemble your entire row on the subfloor before attaching it to the first row. To attach, tilt and push the side tongue into the side groove of the first row at an angle of 15 to 20. Lower and click into place lining the edges up carefully. Continue laying remaining planks in this matter.



To fit the final row, lay a plank upside down on the flooring as per diagram with the tongue side close to the wall. Take another plank and place it right on top of the previous row and use it as a ruler. Don't forget to allow room for spacers. Cut the plank and attach into position.



Heating vents require expansion room. First, cut plank to the correct length. Place the cut plank at its actual position and use a ruler to measure the areas to be cut out and mark them. Cut out the marked points allowing the necessary expansion distance.



The gap between the bottom of a door and the vinyl flooring should be 1 cm height. To trim door frames, turn a plank upside down. Place it next to the door frame as per diagram. Use a handsaw and cut away the necessary height to that the planks can slide easily underneath the frame.